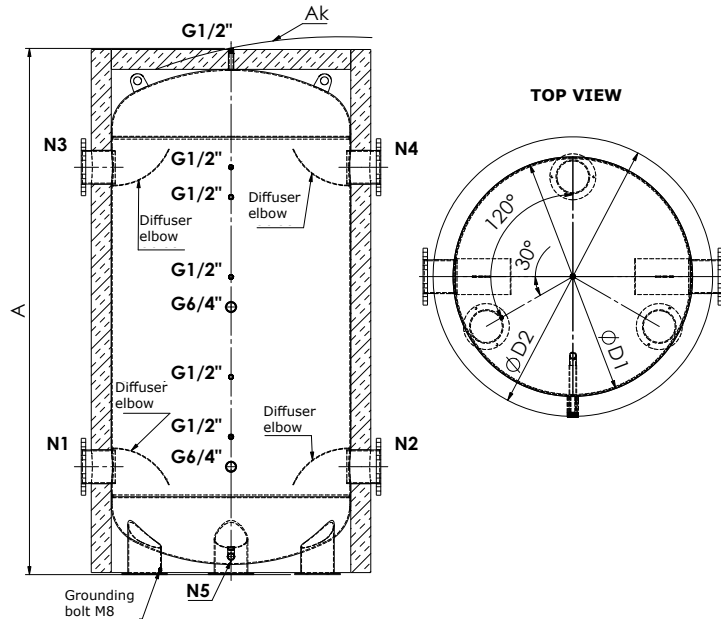
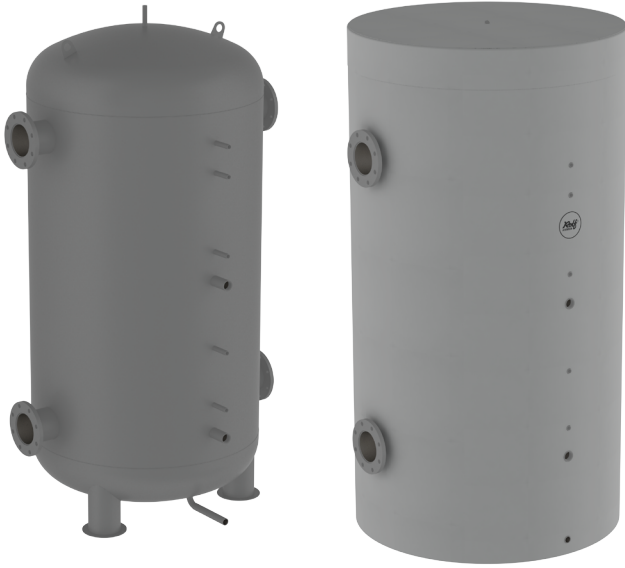


Type - AKU VS / 10 bar buffer tank for heating and cooling systems with high flow rates



- Buffer tank for heating and cooling systems
- Floor-standing design
- Volumes: 500 - 10 000 liters
- Optional accessory: high-quality thermal insulation ROLFIZOL 100 mm
- The tank is internally equipped with diffusion elbows for efficient medium stratification and full volume utilization

Technical Specification of the Tank:

- Tank material: carbon steel
- External surface finish: grey primer RAL 7035
- Maximum operating pressure: 10 bar
- Maximum operating temperature: 100 °C
- Length of flanged nozzles: 150 mm
- Connecting flanges according to EN 1092-1 / PN 16
- All threaded nozzles are equipped with G-type female threads
- Warranty: 24 months

Thermal Insulation of the Tank (optional accessory):

ROLFIZOL 100 PE fleece with zipped PVC jacket (removable version)

Technical Specification of the Insulation:

- Standard insulation thickness: 100 mm
- Material: PES (polyester) fleece
- Outer surface: soft PVC foil in grey (standard)
- Fire resistance: E (according to EN 13501-1+A1)
- Maximum long-term/short-term operating temperature: 100/150 °C
- Thermal conductivity coefficient: 0.037 W/mK
- Energy efficiency class: C

Dimension table

Model	Order Code	Total Vol. (liters)	ØD1 (mm)	ØD2 (mm)	A (mm)	Ak (mm)	N1-N4	N5	Weight (kg)	Stat. Loss (W)	Energy Class
AKU VS 500 / 10 bar	101050	475	600	800	1 933	1 960	DN80	G3/4"	145	85	C
AKU VS 600 / 10 bar	101060	613	600	800	2 433	2 460	DN80	G3/4"	175	94	C
AKU VS 750 / 10 bar	101075	725	790	990	1 760	1 800	DN80	G3/4"	180	98	C
AKU VS 850 / 10 bar	101085	845	790	990	2 010	2 050	DN80	G3/4"	205	102	C
AKU VS 1000 / 10 bar	101101	1 025	790	990	2 385	2 420	DN 100	G3/4"	236	117	C
AKU VS 1000 / 10 bar*	101100	1 023	850*	1 050	2 123	2 160	DN100	G3/4"	230	112	C
AKU VS 1250 / 10 bar	101125	1 252	950	1 150	2 076	2 120	DN125	G3/4"	294	128	C
AKU VS 1500 / 10 bar	101151	1 601	950	1 150	2 576	2 610	DN125	G3/4"	352	158	C
AKU VS 1500 / 10 bar*	101150	1 500	1 000*	1 200	2 245	2 280	DN125	G3/4"	330	147	C
AKU VS 2000 / 10 bar	101201	2 080	1 000	1 200	2 995	3 030	DN150	G3/4"	435	180	C
AKU VS 2000 / 10 bar*	101200	2 230	1 200*	1 400	2 335	2 380	DN150	G3/4"	492	189	C
AKU VS 2500 / 10 bar	101250	2 560	1 200	1 400	2 635	2 670	DN150	G1"	545	---	---
AKU VS 3000 / 10 bar	101301	3 060	1 200	1 400	3 085	3 120	DN200	G1"	645	---	---
AKU VS 3000 / 10 bar*	101300	3 138	1 400*	1 600	2 437	2 490	DN200	G1"	615	---	---
AKU VS 3500 / 10 bar	101350	3 670	1 400	1 600	2 787	2 840	DN200	G1"	690	---	---
AKU VS 4000 / 10 bar	101402	4 165	1 200	1 400	4 085	4 120	DN200	G1"	825	---	---
AKU VS 4000 / 10 bar*	101400	4 276	1 400*	1 600	3 187	3 230	DN200	G1"	770	---	---
AKU VS 4000 / 10 bar**	101401	4 130	1 600**	1 800	2 526	2 590	DN200	G1"	920	---	---
AKU VS 4500 / 10 bar	101450	4 665	1 400	1 600	3 437	3 480	DN200	G1"	820	---	---
AKU VS 4500 / 10 bar*	101451	4 625	1 600*	1 800	2 776	2 840	DN200	G1"	995	---	---
AKU VS 5000 / 10 bar	101501	5 015	1 400	1 600	3 687	3 730	DN200	G1"	870	---	---
AKU VS 5000 / 10 bar*	101500	5 125	1 600*	1 800	3 026	3 080	DN200	G1"	1 075	---	---
AKU VS 6000 / 10 bar	101600	6 115	1 600	1 800	3 526	3 580	DN200	G1"	1 230	---	---
AKU VS 6500 / 10 bar	101650	6 610	1 600	1 800	3 776	3 860	DN200	G1"	1 310	---	---
AKU VS 7000 / 10 bar	101700	7 105	1 600	1 800	4 026	4 080	DN200	G1"	1 390	---	---
AKU VS 8000 / 10 bar	101801	8 100	1 600	1 800	4 526	4 580	DN200	G1"	1 545	---	---
AKU VS 8000 / 10 bar*	101800	7 900	1 800*	2 000	3 622	3 680	DN200	G1"	1 430	---	---
AKU VS 10000 / 10 bar	101108	10 412	1 800	2 000	4 622	4 670	DN200	G1"	1 780	---	---
AKU VS 10000 / 10 bar*	101109	9 975	2 000*	2 200	3 713	3 780	DN200	G1"	1 640	---	---

* Alternative capacities with different diameters available. Tank dimensions are informative, subject to change without notice.